

High Reliability 0.4-inch 4-Digits 7-Segment Numeric Displays

SND-440B SND-447B

GENERAL DESCRIPTION

The SND-440B and the SND-447B series are high performance epoxy resin molded 4-digit 7-segment LED displays for an application which space is at a premium. The character height is approximately 0.4-inch (10.0 mm) and available in red, green, orange and yellow-green emitting colors.

The standard unit is constructed with black face and milky white segment color.

PACKAGE DIMENSIONS

Actual size

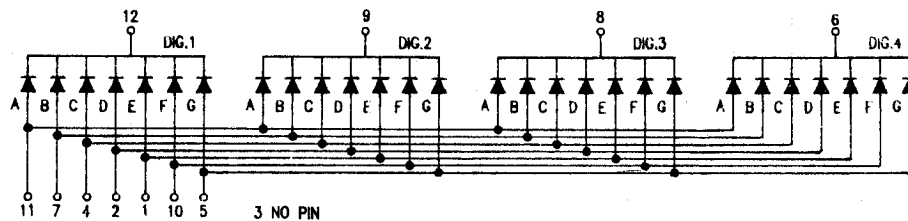
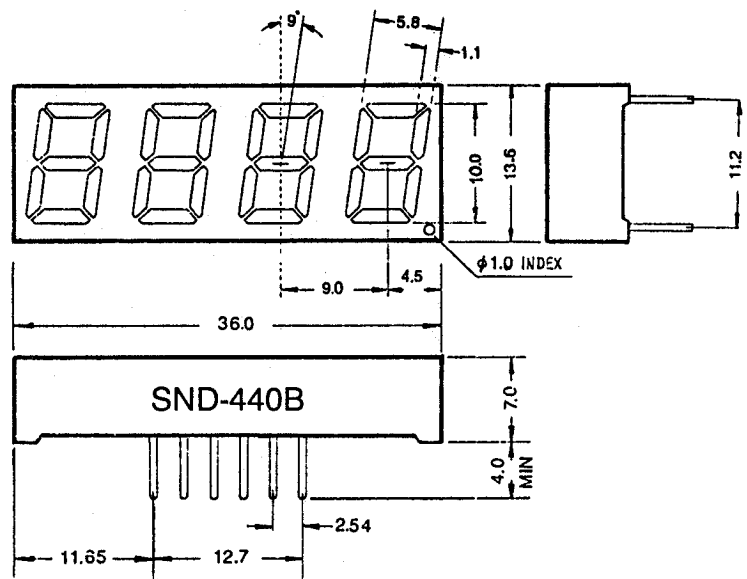
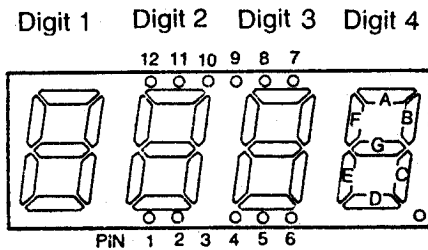


FEATURES

1. High brightness and high contrast
2. Low power consumption; Directly drive with I.C
3. Wide angle viewing
4. Solid state reliability; Long operation life
5. Cathode-common (SND-440B) and anode-common (SND-447B) types available

PIN ARRANGEMENT

(Top View)



SND-440B (Cathode Common)

SND-447B (Anode Common) All diodes are reversed polarity



三光半導体株式会社
SAM KWANG SEMICONDUCTOR CO., LTD.
 803 Silla Techno Vil., 39-3 Dang-dong Kunpo-City Kyungki-do, Korea,
 TEL:031-456-1444/1484, FAX:031-456-4224

Red SND 440B/447BR (GaP)

Absolute Maximum Ratings ($T_a = 25^\circ\text{C}$)

Power dissipation/Total	1280	mW
Power dissipation/Seg	40	mW
Forward current	20	mA
Peak forward current	60*	mA
Reverse voltage	4	V
Operating temperature	-25 ~ +85	$^\circ\text{C}$
Storage temperature	-55 ~ +100	$^\circ\text{C}$

Electrical/Optical Characteristics ($T_a = 25^\circ\text{C}$)

Parameter	Symbol	Conditions	Min	Typ	Max.	Unit
Forward voltage/Seg	V_F	$I_F = 10\text{mA}$	—	2.1	2.3	V
Reverse current/Seg	I_R	$V_R = 4\text{V}$	—	—	10	μA
Luminous intensity/digit	I_V	$I_F = 10\text{mA}$	300	800	—	μcd
Peak wavelength	λ_P	$I_F = 10\text{mA}$	—	700	—	nm
Spectral line halfwidth	$\Delta\lambda$	$I_F = 10\text{mA}$	—	100	—	nm

Green SND 440B/447BG (GaP)

Absolute Maximum Ratings ($T_a = 25^\circ\text{C}$)

Power dissipation/Total	1280	mW
Power dissipation/Seg	40	mW
Forward current	20	mA
Peak forward current	60*	mA
Reverse voltage	4	V
Operating temperature	-25 ~ +85	$^\circ\text{C}$
Storage temperature	-55 ~ +100	$^\circ\text{C}$

Electrical/Optical Characteristics ($T_a = 25^\circ\text{C}$)

Parameter	Symbol	Conditions	Min	Typ	Max.	Unit
Forward voltage/Seg	V_F	$I_F = 10\text{mA}$	—	2.1	2.3	V
Reverse current/Seg	I_R	$V_R = 4\text{V}$	—	—	10	μA
Luminous intensity/digit	I_V	$I_F = 10\text{mA}$	350	900	—	μcd
Peak wavelength	λ_P	$I_F = 10\text{mA}$	—	555	—	nm
Spectral line halfwidth	$\Delta\lambda$	$I_F = 10\text{mA}$	—	30	—	nm

Orange SND 440B/447BSR (GaAsP/GaP)

Absolute Maximum Ratings ($T_a = 25^\circ\text{C}$)

Power dissipation/Total	1280	mW
Power dissipation/Seg	40	mW
Forward current	20	mA
Peak forward current	60*	mA
Reverse voltage	4	V
Operating temperature	-25 ~ +85	$^\circ\text{C}$
Storage temperature	-55 ~ +100	$^\circ\text{C}$

Electrical/Optical Characteristics ($T_a = 25^\circ\text{C}$)

Parameter	Symbol	Conditions	Min	Typ	Max.	Unit
Forward voltage/Seg	V_F	$I_F = 10\text{mA}$	—	2.0	2.2	V
Reverse current/Seg	I_R	$V_R = 4\text{V}$	—	—	10	μA
Luminous intensity/digit	I_V	$I_F = 10\text{mA}$	700	1500	—	μcd
Peak wavelength	λ_P	$I_F = 10\text{mA}$	—	635	—	nm
Spectral line halfwidth	$\Delta\lambda$	$I_F = 10\text{mA}$	—	35	—	nm

Yellow-green SND 440B/447BUG (GaP)

Absolute Maximum Ratings ($T_a = 25^\circ\text{C}$)

Power dissipation/Total	1280	mW
Power dissipation/Seg	40	mW
Forward current	20	mA
Peak forward current	60*	mA
Reverse voltage	4	V
Operating temperature	-25 ~ +85	$^\circ\text{C}$
Storage temperature	-55 ~ +100	$^\circ\text{C}$

Electrical/Optical Characteristics ($T_a = 25^\circ\text{C}$)

Parameter	Symbol	Conditions	Min	Typ	Max.	Unit
Forward voltage/Seg	V_F	$I_F = 10\text{mA}$	—	2.1	2.3	V
Reverse current/Seg	I_R	$V_R = 4\text{V}$	—	—	10	μA
Luminous intensity/digit	I_V	$I_F = 10\text{mA}$	600	1500	—	μcd
Peak wavelength	λ_P	$I_F = 10\text{mA}$	—	565	—	nm
Spectral line halfwidth	$\Delta\lambda$	$I_F = 10\text{mA}$	—	30	—	nm

* Pulse Width 1 ms
Duty Cycle 1/5