

# High Brightness 33.0x35.0mm Flat LED Displays

## SBD 3335T

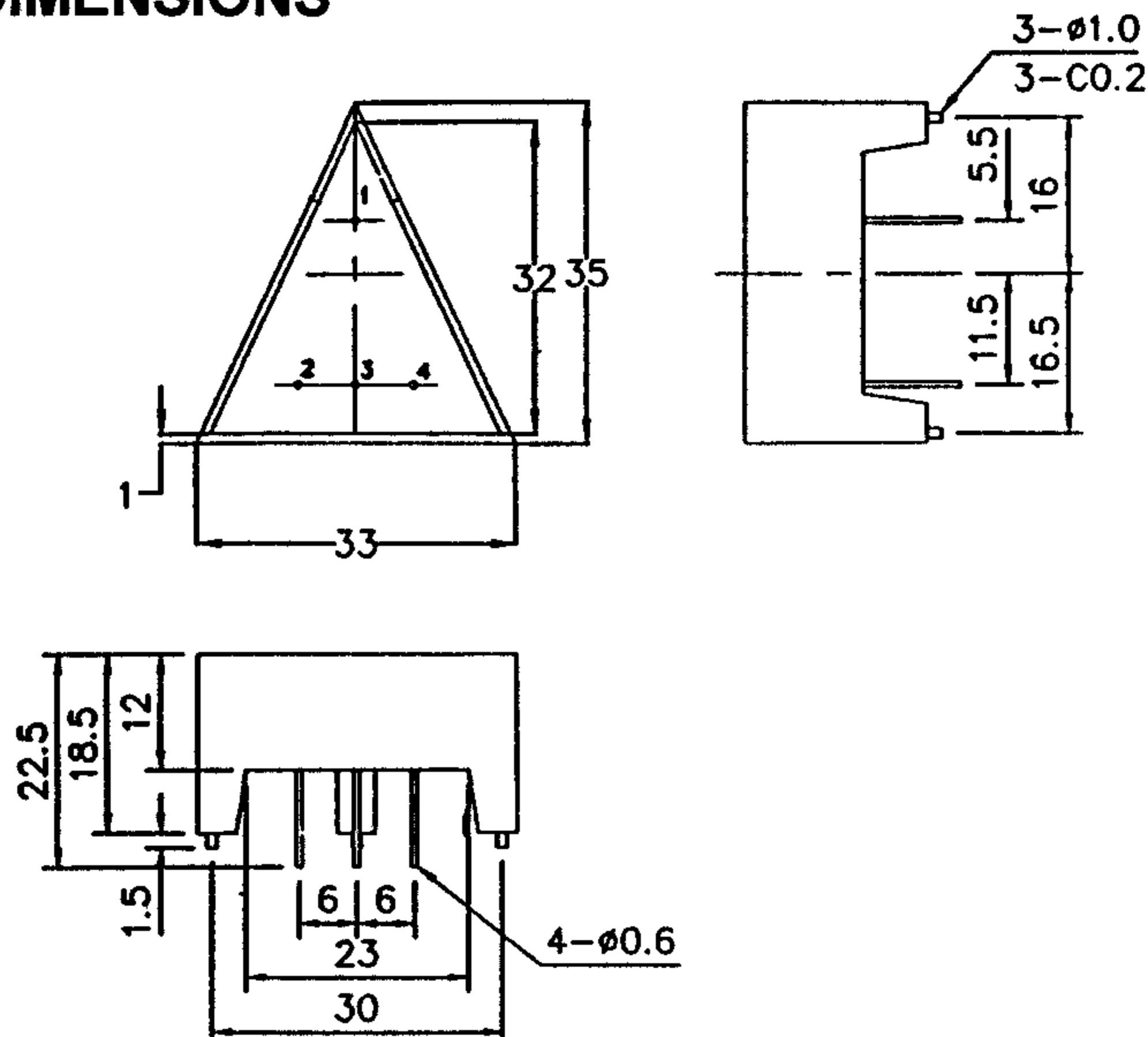
### GENERAL DESCRIPTION

The SBD 3335T series are a reflecting high brightness flat LED displays. The active face size is 1/2( 30.0x32.0mm ) and available in red, orange and yellow-green emitting colors.

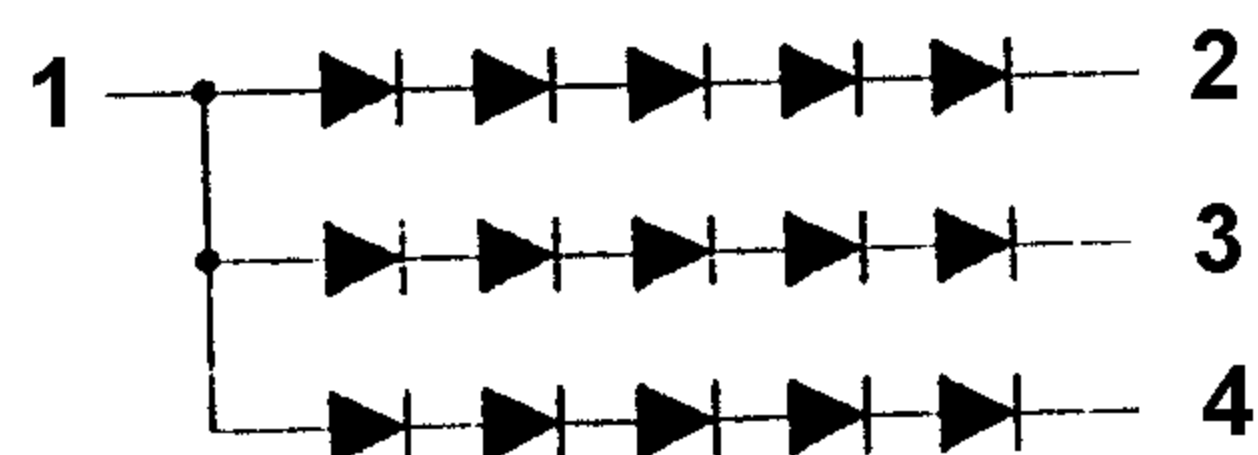
### FEATURES

1. High brightness and high contrast
2. Excellent visibility : uniform brightness, wide angle viewing
3. Low power consumption
4. Solid state reliability and long operation life

### PACKAGE DIMENSIONS



### PIN ARRANGEMENT



**三光半導体株式会社**  
**SAM KWANG SEMICONDUCTOR CO., LTD.**

803 Silla Techno Vil., 39-3 Dang-dong Kunpo-City Kyungki-do, Korea,  
TEL:031-456-1444/1484, FAX:031-456-4224